

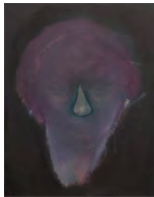
VERLAG FÜR MODERNE KUNST

May 11 – 29, 2016

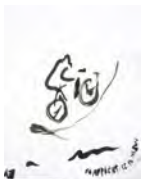
From left to right:



Doug Aitken
Twilight (earth-core), 2015
 Print on Hahnemühle paper. Silhouette embossed and varnished.
 Framed in dark brown elder-wood box frame, museum quality glass.
 Edition of 50 + 10 AP
 15.7 x 11.8 inches (40 x 30 cm) \$1,900



Daniel Domig
No One Knows, 2013
 Oil on canvas
 27 x 20 in.
 (60 x 50 cm) \$4,000



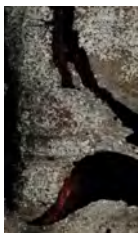
Rainer Ganahl
Apprentice in the Sun, 2016
 Ink on paper
 14 x 11 inches
 (35.5 x 28 cm) \$1,800



Thomas Ruff
Zeitungsfoto 021, 1990
 Photoprint color, Framed in cherrywood frame, museum quality glass.
 Edition of 25
 5.7 x 6.6 inches (14,4 x 16,9 cm), frame: 15.7 x 11.8 inches (40 x 30 cm) \$1,600



David Reed
Color Study 25, 2010
Color Study for Painting 571-2
 oil and alkyd on illustration board
 16 3/8 x 9 3/4 inches (41.6 x 24.8 cm) \$8,000



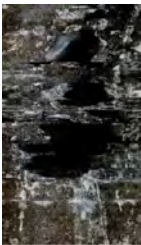
John Skoog
(Rift 2) North Wall, 2015
 Hand-scanned wall parts, laser-printed on 120g blueback paper.
 White-glazed box frame of maple wood.
 Each piece is a unique and titled individually.
 Edition of 11 uniques (+ 1 AP each)
 18.7 x 11 inches (47,6 x 28 cm) \$850

VERLAG FÜR MODERNE KUNST

May 11 – 29, 2016



John Skoog \$850
(Rift 4) East Wall, 2015
 Hand-scanned wall parts, laser-printed on 120g blueback paper.
 White-glazed box frame of maple wood.
 Each piece is a unique and titled individually.
 Edition of 11 uniques (+ 1 AP each)
 18.7 x 11 inches (47,6 x 28 cm)



John Skoog \$850
(Rift 10) South Wall, 2015
 Hand-scanned wall parts, laser-printed on 120g blueback paper.
 White-glazed box frame of maple wood.
 Each piece is a unique and titled individually.
 Edition of 11 uniques (+ 1 AP each)
 18.7 x 11 inches (47,6 x 28 cm)



Sofie Thorsen \$1,200
Spielplastik, 2015
 Folded inkjet print on Photo Rag paper, mounted on black cardboard.
 Black wooden box frame, museum quality glass.
 Edition of 20 + 2 AP
 16.5 x 11.8 inches (42 x 30 cm)



Hanna Paivikki Konola \$ 350
Sumu, 2016
 Inkjet print on white paper, mounted in white-glazed maple wood box frame.
 Edition of 25
 15.7 x 11.8 inches (30 x 40 cm)



Nin Brudermann \$4,500
Medals' Maze (from 'Clash of Giants'), 2015
 Pdf, lacquered
 Edition of 2/3
 19 x 20 x 4 inches
 (48 x 51 x 10 cm)